



# MT GIBSON IRON ORE MINE AND INFRASTRUCTURE PROJECT

---

## ANNUAL COMPLIANCE REPORT Mt Gibson Iron Ore Mine and Infrastructure Project 2010



**ANNUAL COMPLIANCE REPORT 2010****Mt Gibson Iron Ore Mine and Infrastructure Project**

**Document Title:** Annual Compliance Report – Mt Gibson Iron Ore Mine and Infrastructure Project 2010

**Revision Date:** 20<sup>th</sup> April 2011

**Approved for Issue:** David Quinlivan  
*PP*  
Chief Executive Officer  
Mount Gibson Mining Limited

Bill Mackenzie  
Managing Director  
Extension Hill Pty Ltd

**Signed:**



Rev	Date	Revision description	By	Distribution
A	23.10.2010		J. Sackmann	P. Panek (MGM) J. Ranford (MGM) D. Carter (MGM) H. Goff (EHPL) D. Milton (EHPL) P. Jones (EHPL)
B	03.03.2011	Revised to meet DMP reporting requirements	J. Sackmann	C. Angel (MGM) D. Quinlivan (MGM) B. Mackenzie (EHPL) P. Jones (EHPL) H. Goff (EHPL) D. Milton (EHPL)
0	20.04.2011	Approved for issue		C. Adams (OEPA)

**Mount Gibson Mining Limited ©**

This document is copyrighted ©. All rights are reserved. Apart from any fair dealing for the purpose of private study, research, criticism or review as permitted under the Copyright Act, no part may be reproduced, stored in a retrieval system, or transmitted, in any form or by any means electronic, mechanical, photocopying, recording, or otherwise without prior permission.

## TABLE OF CONTENTS

1. INTRODUCTION .....	1
1.1. Intent .....	1
1.2. Project Overview .....	1
1.3. Environmental Reporting Requirements.....	1
2. CURRENT STATUS .....	4
3. COMPLIANCE.....	5
3.1 Non-compliances .....	6
3.2 Non-Conformances.....	6
3.3 Incidents .....	6
3.4 Internal Audits .....	6
3.5 External Audits.....	7
4. ENVIRONMENTAL MONITORING .....	8
4.1 Malleefowl Monitoring.....	8
4.2 Vegetation Monitoring.....	11
4.3 Groundwater Monitoring .....	11
5. STAKEHOLDER CONSULTATION .....	12
6. REFERENCES .....	13

## LIST OF TABLES

Table 1 Vegetation Clearing by Lease/Disturbance Area.....	5
Table 2 Results Summary of Malleefowl Mound Monitoring.....	8

## LIST OF FIGURES

Figure 1 Project Location .....	2
Figure 2 Project Infrastructure Layout.....	3
Figure 3 Malleefowl Mound Map January 2010 .....	10
Figure 4 Standing Water Levels in Production Bores.....	11

## LIST OF APPENDICES

Appendix A – Ministerial Statement 753 Audit Table	
--	--

## 1. INTRODUCTION

### 1.1. Intent

This Annual Compliance Report has been developed to summarise the project status and compliance of the proponents' activities in relation to Ministerial Statement 753 (MS753) – the Mt Gibson Iron Ore Mine and Infrastructure Project (the Project) and the environmental management requires of the Project. This report covers the period from commencement of the project to the 24<sup>th</sup> October 2010 and addresses the requirements of conditions 4-1 to 4-3 of MS 753 and also addresses the proponents' environmental reporting requirements to the Department of Mines and Petroleum (DMP).

### 1.2. Project Overview

The Project consists of a combined hematite and magnetite open cut mining operation, with Mount Gibson Mining Limited (MGM) managing the hematite aspect and Extension Hill Pty Ltd (EHPL) managing the magnetite aspect. The Project was approved by the Minister for the Environment with the issuing of MS753 on the 24<sup>th</sup> of October 2007 and the approval of subsequent minor amendments to the project (20<sup>th</sup> February 2008, 26<sup>th</sup> August 2008, 2<sup>nd</sup> June 2009 and 31<sup>st</sup> March 2010). The Project was approved by the Commonwealth Department of Environment, Water, Heritage and the Arts (DEWHA) on the 18<sup>th</sup> December 2007 (EPBC ref 2005/2381).

The Project is located approximately 350km north east of Perth in Western Australia (Figure 1). The site is located immediately adjacent to the Great Northern Highway, approximately 80km north of Wubin, and includes deviation of a 5km section of the existing Great Northern Highway to maintain a safe distance between public traffic and the mine blasting area.

Mining of approximately 13 million tonnes of hematite will occur over an expected mine life of 5 years, as direct shipping grade ore. Minimal processing of the ore (crushing and screening) is required before it is transported by road and rail to Geraldton Port for shipping. Hematite transport is addressed in a separate approval (Ministerial Statement 786).

The magnetite component of the Project has an expected mine life of 40 years and involves the mining of approximately 1,000 million tonnes of magnetite. Magnetite will be processed by crushing, grinding and magnetic separation to produce a concentrate which will be transported as magnetite slurry through a pipeline to Geraldton Port for shipping.

Mine infrastructure required includes administration areas, workshops, crushers and processing plant, accommodation camps and an airstrip (Figure 2). The vegetation disturbance footprint for the Project is not to exceed 1038 hectares at the mine site and 90 hectares for the magnetite slurry pipeline and services corridor.

### 1.3. Environmental Reporting Requirements

The following environmental reporting requirements will be met throughout the construction and operation of the Project:

- Approval conditions applied by the Minister for the Environment under MS753;
- Approval conditions applied by the Commonwealth Department of Environment, Water, Heritage and the Arts (EPBC ref 2005/2381);
- Groundwater License approval conditions applied by the Department of Water (GWL 166067); and
- Any other environmental reporting requirements, as required to maintain legal compliance with all environmental licenses associated with the Project.



Figure 1 Project Location

Figure 2 Road / Rail / Service Corridor Infrastructure Locations

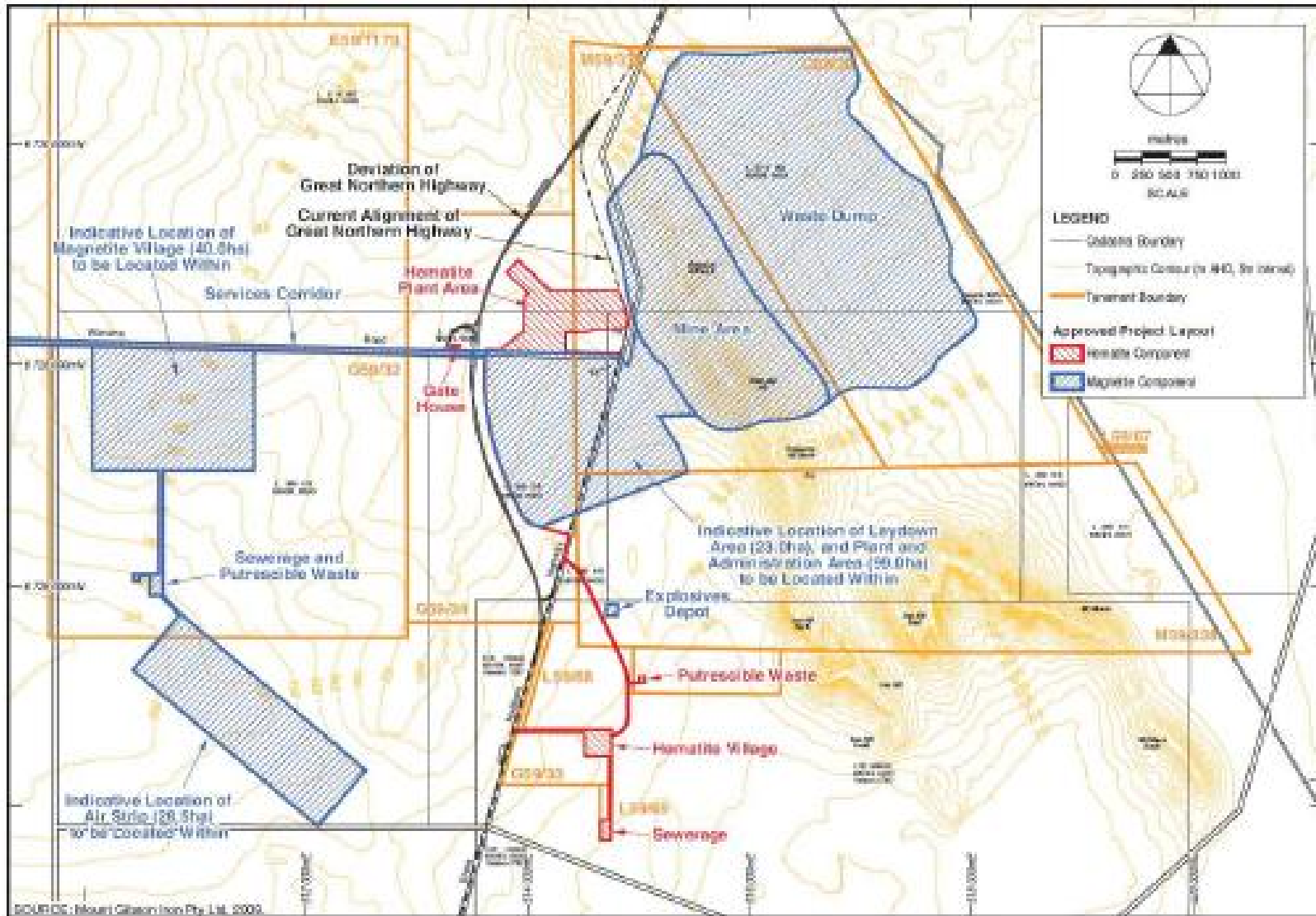


Figure 2 Project Infrastructure Layout

## 2. CURRENT STATUS

Due to a number of factors including, delays in receiving approval from the Department of Environment and Conservation to undertake ground disturbing activities; delays in receiving project approval from the Department of Consumer and Employment Protection (DoCEP) and the Department of Industry and Resources (DOIR) – now known as the Department of Mines and Petroleum (DMP); and unfavourable economic conditions; there was no ground disturbing activity during the 2008 and 2009 reporting years. As such, a compliance report was not required for the Project in 2008 or 2009.

The Extension Hill Hematite Operation (EHHO) (which was placed on hold in late 2008) was recommenced in March 2010 and the first ground disturbing activities for the Project occurred on the 23<sup>rd</sup> June 2010. Construction works for the EHHO have progressed significantly during the reporting period, such that operational mining is expected to commence in the next reporting period.

Site earthworks were commenced during the reporting period at the key hematite infrastructure sites, including the hematite accommodation village, the hematite ROM and processing plant areas, and the hematite mine administration and workshop areas. A total of approximately 40.5ha of vegetation clearing was conducted during the reporting period for these purposes (Table 1). Placement of buildings and installation of services at the hematite accommodation village was also commenced during the period and will be completed in the next reporting period.

A total of 18.4 hectares of vegetation was cleared during the reporting period for the construction of the Great Northern Highway deviation. Earthworks and the intersection bridgeworks have commenced and the highway deviation is expected to be completed within the next reporting period.

Project planning for the magnetite aspect of the Project has been ongoing, however ground disturbing activities for the Magnetite Operation are yet to commence.

Table 1 Vegetation Clearing by Lease/Disturbance Area (for Department of Mines and Petroleum)\*

Description of Mining Disturbance**	L59/69	G59/33	L59/87	L59/63	G59/34	M59/339	G59/30	M59/338	M59/526
ROM/Crusher/Stockpile					11.7 <sup>#</sup> (14)				
Mine Haul Roads					4.6	10 (15)	1 (1)		
Mine Roads	7.5 (9)		3.0 (4)	(1)	2.5 (7)	(3)		(1)	(1)
Accommodation Camp (incl. access rd)									
Sewage Pond (incl. access rd)									
Offices/Workshop					5.3 <sup>^</sup> (6)				
Turkeys Nest						2.4 (2)			
Putrescible Landfill Facility									0.3 (1)
Security Gatehouse					0.2				
Borrow Pit						5.5 (14)			
Hematite Explosives Depot								0.5 (1)	
Hematite Mine Pit						48 (48)			
Hematite Waste Dump						11 (11)	45 (45)		
Haul Road Within Tenements					4.3 (2)				
Topsoil/Tritter Stockpile						12 (12)	9 (9)		

\* The approved disturbance areas, as per the Mining Proposal approved by the Department of Mines and Petroleum, are shown in brackets. The planned clearing for the next reporting period is shown in red.

\*\* 'Description of Mining Disturbance' is listed as per the Mining Proposal – some items fall within other approved clearing areas for Ministerial Statement 753, ie the 'Borrow Pit' is located within the area approved for clearing for the Magnetite Waste Dump under MS 753. All clearing was conducted within the boundaries approved by the DEC within one minor exception described in Section 3.1.

<sup>#</sup> 4.1ha of this area was already cleared under approval granted from DEC Ministerial Statement 786.

<sup>^</sup> 2.7ha of this area was already cleared under approval granted from DEC Ministerial Statement 786.



### 3. COMPLIANCE

Ministerial Statement 753 imposes a number of conditions that the proponent must meet in order to minimise detrimental impacts of the Project on the environment. The status of these conditions, as defined in *Performance and Compliance Reporting – Guidelines for Proponents* (DEC 2007), is listed in Appendix A.

A number of conditions of MS753 were completed prior to the reporting period (subsequent to the issuing of MS753) and during the reporting period, relating primarily to the preparation of Research, Interim Recovery and Management Plans for various aspects of the Project environment. This is evidenced by correspondence received from the DEC (pers. comm. C. Murray, 7<sup>th</sup> August 2008).

Conditions 4-1 and 4-3 of MS753, relating to the submission of annual compliance reports have been classified as 'In process' as there were no compliance reports submitted for the preceding period, as discussed in Section 2.

Condition 16-1 of MS753, relating to the offsets package is classified as 'In process' due to delays in obtaining information from and agreements with other parties in relation to listed offsets.

The remaining conditions of MS753 were classified as either 'Satisfactory during this period', 'No longer relevant' or 'Not required at this stage'.

#### 3.1 Non-compliances

There was one non-compliance recorded during the reporting period. The clearing footprint for the security gatehouse, as approved in Attachment 2 of MS753, was shifted 4m north due to an overlap of the approved security gatehouse location and the upgraded Wanarra Road footprint (as approved under Ministerial Statement 786). The total area cleared for the security gatehouse was not increased, and there were no priority flora or fauna species impacted by the slight shift to the footprint. This incident was assessed as being insignificant under the approved incident management system. A review was conducted of the clearing footprint of the Project against the approved footprint of the Extension Hill Hematite Haul Road Project to ensure no further overlaps exist and to prevent a recurrence of this incident.

#### 3.2 Non-Conformances

There were no non-conformances recorded during the reporting period.

#### 3.3 Incidents

In addition to the non-compliance described in Section 3.1, there were two further environmental incidents recorded. Both incidents were hydrocarbon spills of less than 100L and both were assessed as being insignificant in accordance with the approved incident management system.

The first resulted from the failure of a seal in a contractor's water cart and was cleaned up immediately. The vehicle was inspected and seals replaced before it returned to work.

The second hydrocarbon spill occurred during an attempted theft from a contractor's fuel tank when the burglars discharged a small quantity of transmission oil onto the ground in order to fill the empty oil pod with stolen diesel. This was cleaned up upon discovery at the start of the next shift. To prevent a recurrence of this incident, all empty or near empty oil pods are chained up and machinery is parked in front of the fuel shed at the end of each shift to prevent access.

#### 3.4 Internal Audits

No internal audits have been conducted to date.

### 3.5 External Audits

No external audits have been conducted to date. An independent compliance audit is currently scheduled for November 2011.

## 4. ENVIRONMENTAL MONITORING

### 4.1 Malleefowl Monitoring

#### *Malleefowl Mound Monitoring*

The Project is located in an area known to contain the priority fauna species, *Leipoa ocellata* (Malleefowl). Due to the difficulties and impracticality of accurately assessing the malleefowl population through census of individuals of this species, the number of active nesting mounds in an area is widely used and recognised as a suitable proxy. It provides data regarding the number of reproductively active birds in the area, which has a direct relationship with the likelihood of survival of the local population. A survey of the mining tenements was conducted in the 2004/2005 breeding season, which resulted in the discovery of 113 Malleefowl breeding mounds (ATA Environmental 2005).

Ongoing monitoring of the malleefowl mounds involves a visual inspection to determine if the mounds are 'active' (being used for breeding) or 'inactive' at the time of the survey. Mounds were classified as 'active' if they appeared to be being used or 'inactive' if they did not. Inactive mounds were further classified as extinct if they are unlikely to be used again, ie mounds that are flat and in areas that contain alternative open spaces suitable for mound building, amongst the vegetation. Large, stable inactive mounds with little vegetation growth inside them have been further classified as good mounds, likely to be used sometime in the future. A number of inactive mounds were also classified as 'Worked/Disturbed' in cases where there appears to have been some activity, likely to be attributed to malleefowl, but the mounds were not completed sufficiently to be considered 'active' (MGM 2010).

Monitoring programs of the known Malleefowl mounds located on the mining tenements were conducted in October/November 2008 for the 2008/2009 breeding season and in January 2010 for the 2009/2010 breeding season (Figure 3). Table 2 summarises the results of these monitoring surveys in comparison to the initial site survey conducted in the 2004/2005 breeding season.

**Table 2 Results Summary of Malleefowl Mound Monitoring**

Status		Number of Mounds			
		2009/2010	2008/2009	2007/2008	2004/2005
Active		10	5	1	15
Inactive		52	65	8	98
	Extinct	17	16		
	Good Mound	21	14		
	Worked/Disturbed	6	1		
Not Found		9	6		
Not Checked		0	8	104	
Cleared		1			

There were two additional mounds discovered during the 2008 survey and one during the 2010 survey. One mound within the Project footprint had been cleared during exploration drilling works in 2009, resulting in a total of 115 mounds recorded within the tenement area. Nine of these mounds were searched for but were not found during the 2010 monitoring program.

Eight of the ten mounds recorded as active in 2010 had been active in at least one previous season, with four of these having been active each time they were checked. Further detail and discussion of these results is included in the monitoring report, *Annual Malleefowl Mound Monitoring January 2010* (MGM 2010).

#### *Malleefowl Sightings*

All site personnel are trained to recognise a Malleefowl and report any sightings of live Malleefowl that they encounter. A total of 38 Malleefowl sightings were recorded during the reporting period. Eleven of the reported sightings were of pairs of Malleefowl and 2 sightings were reported of three

**Mt Gibson Iron Ore Mine and Infrastructure Project**

Malleefowl seen together. The remainder of the sightings were of single birds. Only three of the reported sightings were on the mine tenements, with a number of sightings being recorded at the accommodation village located approximately 20km south of the Project site and the remainder being sighted along Wanarra Road, between Perenjori and the Project site.

A particularly noteworthy sighting was recorded on the 1<sup>st</sup> July 2010, when a pair of Malleefowl were sighted 'scratching around approximately 100m from a working grader' (pers. comm. M. Miller 1/7/2010). Malleefowl were reported on a number of other occasions standing in the road in front of ongoing traffic but on an equal number of occasions they were seen to seek cover and run into the bush in the presence of a vehicle.

**Malleefowl Deaths**

One Malleefowl death was recorded during the reporting period. A Malleefowl carcass was discovered in the 4<sup>th</sup> February 2010 by a Botanic Gardens and Parks Authority research assistant whilst conducting research work relating to Declared Rare Flora. There were no construction works being undertaken at that time and the Malleefowl was not discovered in sufficient proximity to vehicle access tracks to indicate that vehicular impact was responsible for the death. There is insufficient data available to determine a cause of death however it is likely that the Malleefowl fell victim to feral animal predation or died of natural causes.

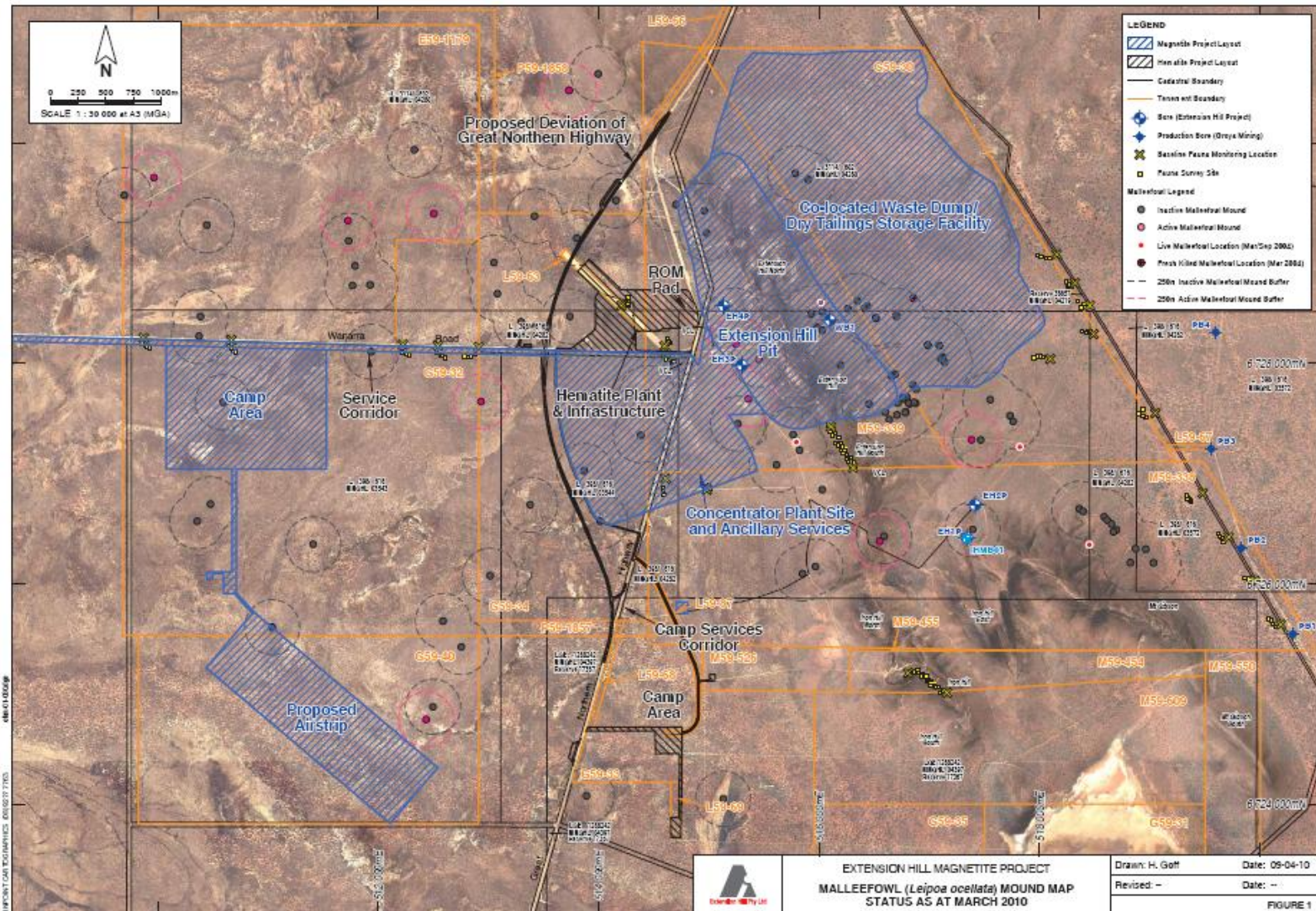


Figure 3 Malleefowl Mound Map January 2010

## 4.2 Vegetation Monitoring

June 2010 marked the conclusion of the proponent funded *Darwinia masonii* and *Lepidosperma gibsonii* research program, conducted by the Botanic Gardens and Parks Authority. The results of this work are still pending.

## 4.3 Groundwater Monitoring

There are 4 production bores located on the mining tenements (Figure 1). Water abstraction from these bores was approved by the Department of Water with the issuing of groundwater license GWL 166067 (valid from 1<sup>st</sup> October 2008). Bores EH1P and EH2P are intended to supply the potable water for the Project, whilst bores EH3P and EH4P will provide the raw water required for dust suppression and other site uses.

The total quantity of groundwater abstracted during the reporting period is 77,218kL. This groundwater was abstracted from bores EH2P (289kL), EH3P (53,010kL) and EH4P (23,919kL). Groundwater was used primarily for dust suppression and earthworks. The EH1P was not pumped during the reporting period. GWL 166067 allows the abstraction of 500,000kL/year.

During the abstraction period (commencing in July 2010), the water level in the groundwater bores was recorded weekly and the standing water level (12 hours rested for EH3P and EH4P, 24 hours rested for EH2P) recorded at least monthly (Figure 4).

EH1P bore showed natural fluctuations of water level of  $\pm 0.08\text{m}$  over the period of monitoring. EH2P peaked at a maximum standing water level depth of 45.13m BTOC in October 2010, with the minimum depth being recorded as 42.59m BTOC in April 2010. During this period, the standing water level dropped 16m in EH3P and 10m in EH4P. This is within the expected long-term drawdown for these bores under the approved pumping regime (Rockwater 2008).

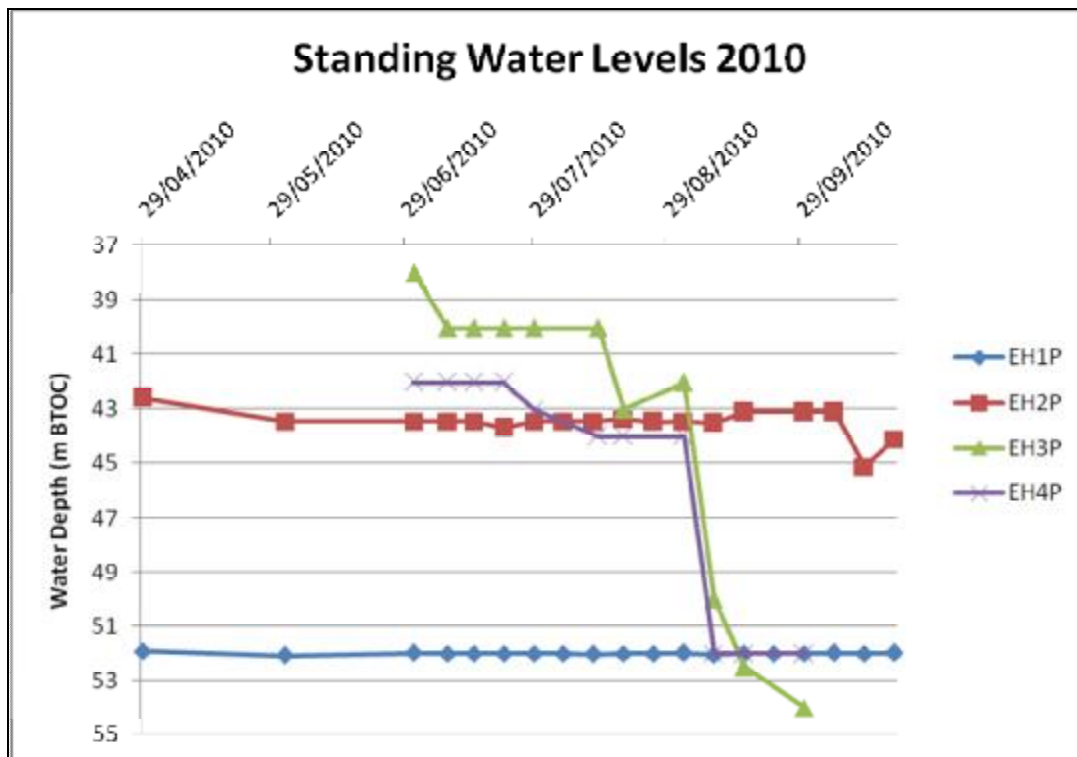


Figure 4 Standing Water Levels in Production Bores

## 5. STAKEHOLDER CONSULTATION

A stakeholder consultation meeting was held at White Wells Station on the 14<sup>th</sup> April 2010. MGM provided a project update, followed by discussions of the proposed management procedures to address bushfire management, weed management, fauna and feral animal management and closure planning. All attendees were encouraged to participate in discussions relating to these issues and then the floor was opened for discussions of any other issues. The meeting was attended by representatives from Bush Heritage Australia, Ninghan Station, the North Central Malleefowl Preservation Group, the Shire of Perenjori, the Shire of Yalgoo, EHPL and MGM.

Since the commencement of ground disturbing activities, further informal consultation has occurred with the station managers of Ninghan Station, White Wells Station, Wanarra Station, the Shire of Perenjori and other interested parties, including residents of the local towns, in the form of station visits, telephone communications and informal discussions with the proponents' project management team.

A meeting was held with the local DEC branch in Geraldton on the 6<sup>th</sup> July 2010. Items on the agenda were a project status update, the dust and vegetation monitoring procedures and the status of the offsets agreements. This meeting was attended by representatives from DEC, MGM and EHPL.

## 6. REFERENCES

ATA Environmental (2005), *Malleefowl Assessment, Mount Gibson*, Unpublished report for Mount Gibson Mining Limited, Perth.

DEC (2007), *Performance and Compliance Reporting – Guidelines for Proponents*, Department of Environment and Conservation, Government of Western Australia.

MGM (2007), *Annual Malleefowl Mound Monitoring January 2010*, unpublished report by Mount Gibson Mining Limited.

Rockwater (2008), *Extension Hill Hematite Project - Groundwater Supply Bore Completion Report*, Unpublished report for Mount Gibson Iron Ltd.



# APPENDIX A

## Ministerial Statement 753 Audit Table



# AUDIT TABLE

## Proposal Implementation Monitoring Section

**PROJECT:** MT GIBSON IRON ORE MINE &

INFRASTRUCTURE PROJECT SHIRE OF YALGOO

PROPOSERS: MOUNT GIBSON MINING LIMITED and

EXTENSION HILL PTY LTD

**Note:**

- Phases that apply in this table = **Pre-Construction, Construction, Operation, Decommissioning, Overall (several phases)**
- This audit table is a summary and timetable of conditions and commitments applying to this project. Refer to the Minister's Statement for full detail/precise wording of individual elements.
- Code prefixes: M = Minister's condition; P = Proponent's commitment; A = Audit specification; N = Procedure.
- Any elements with status = "Audited by proponent only" are legally binding but are not required to be addressed specifically in compliance reports, if complied with.
- Acronyms list:- Min for Env = Minister for the Environment; CEO = Chief Executive Officer of DEC; DEC = Department of Environment and Conservation; DMP = Department of Mining and Petroleum (formerly DoIR = Department of Industry and Resources); EPA = Environmental Protection Authority; DoAF= Department of Agriculture and Food; DoH = Department of Health; DoW = Department of Water; LGA = local Government Authority; AWH = Australian Wildlife Conservancy; ABHF = Australian Bush Heritage Fund; BGPA = Botanic Parks & Gardens Authority; EHPL = Extension Hill Pty Ltd; PAC = Pindiddy Aboriginal Corporation; MGI = Mount Gibson Iron.

Number	Subject	Action	How	Evidence	Satisfy	Advice	Phase	When	Status
753:G					Min for Env				
753:M1.1	<b>Proposal Implementation</b>	The proponent shall implement the proposal as documented and described in schedule 1 of this statement subject to the conditions and procedures of this statement.	Project implemented in accordance with these criteria	Compliance Report (CR)			Overall		Satisfactory during this period
753:M2.1	<b>Proponent Nomination and Contact Details</b>	The proponent for the time being nominated by the Minister for the Environment under sections 38(6) or 38(7) of the <i>Environmental Protection Act 1986</i> is responsible for the implementation of the proposal.			Min for Env		Overall		Satisfactory during this period

## AUDIT TABLE

### Proposal Implementation Monitoring Section

**PROJECT:** MT GIBSON IRON ORE MINE &

INFRASTRUCTURE PROJECT SHIRE OF YALGOO

PROPOSERS: MOUNT GIBSON MINING LIMITED and

EXTENSION HILL PTY LTD

Number	Subject	Action	How	Evidence	Satisfy	Advice	Phase	When	Status
753:M2.2	<b>Proponent Nomination and Contact Details</b>	The proponent shall notify the Chief Executive Officer of the Department of Environment and Conservation (CEO) of any change of the name and address of the proponent for the serving of a notice or other correspondence within 30 days of such change.	Letter notifying the CEO of any change in proponent contact details.	Letter notifying the CEO of any change in proponent contact details.	CEO		Overall	Within 30 Days of such Change	Not required at this stage
753:M3.1	<b>Time Limit of Authorisation</b>	The authorisation to implement the proposal provided for in this statement shall lapse and be void within five years after the date of this statement if the proposal to which this statement relates is not substantially commenced.			Min for Env		Construction	Five years after the date of statement 753 if the proposal to which this statement relates is not substantially commenced	No longer relevant
753:M3.2	<b>Time Limit of Authorisation</b>	The proponent shall provide the CEO with written evidence which demonstrates that the proposal has substantially commenced on or before the expiration of five years from the date of this statement.	Letter notifying the CEO that the proposal has substantially commenced.	Letter notifying the CEO that the proposal has substantially commenced.	CEO		Construction	On or before the expiration of five years from the date of statement 753 (24 October 2007).	Completed



## AUDIT TABLE

### Proposal Implementation Monitoring Section

**PROJECT:** MT GIBSON IRON ORE MINE &

INFRASTRUCTURE PROJECT SHIRE OF YALGOO

PROPOSERS: MOUNT GIBSON MINING LIMITED and

EXTENSION HILL PTY LTD

Number	Subject	Action	How	Evidence	Satisfy	Advice	Phase	When	Status
753:M4.1	<b>Compliance Reporting</b>	The proponent shall submit to the CEO environmental compliance reports annually reporting on the previous twelve-month period, unless required by the CEO to report more frequently.	Submit to the CEO annual compliance reports, covering the conditions of this audit table.	CR	CEO		Overall	Annually unless required by the CEO to report more frequently	In process
753:M4.2	<b>Compliance Reporting – Prepare Audit Program</b>	The environmental compliance reports shall address each element of an audit program approved by the CEO and shall be prepared and submitted in a format acceptable to the CEO.	The annual compliance reports will cover the conditions of this audit table.	CR	CEO		Overall	Annually	Completed
753:M4.3	<b>Compliance Reporting</b>	Submit to the CEO environmental compliance reports annually	The environmental compliance reports shall: 1. be endorsed by signature of the proponent's Managing Director or a person, approved in writing by the CEO, delegated to sign on behalf of the	CR	CEO		Overall	Annually unless required by the CEO to report more frequently	In process



## AUDIT TABLE

### Proposal Implementation Monitoring Section

**PROJECT:** MT GIBSON IRON ORE MINE &

INFRASTRUCTURE PROJECT SHIRE OF YALGOO

PROPOSERS: MOUNT GIBSON MINING LIMITED and

EXTENSION HILL PTY LTD

Number	Subject	Action	How	Evidence	Satisfy	Advice	Phase	When	Status
			proponent's Managing Director; 2. state whether the proponent has complied with each condition and procedure contained in this statement; 3. provide verifiable evidence of compliance with each condition and procedure contained in this statement; 4. state whether the proponent has complied with each key action contained in any environmental management plan or program required by this statement ; 5. provide verifiable evidence of conformance with each key action contained in						



# AUDIT TABLE

## Proposal Implementation Monitoring Section

**PROJECT:** MT GIBSON IRON ORE MINE &

INFRASTRUCTURE PROJECT SHIRE OF YALGOO

PROPOSERS: MOUNT GIBSON MINING LIMITED and

EXTENSION HILL PTY LTD

Number	Subject	Action	How	Evidence	Satisfy	Advice	Phase	When	Status
			any environmental management plan or program required by this statement; 6. identify all non-compliances and non-conformances and describe the corrective and preventative actions taken in relation to each non-compliance or nonconformance; 7. provide an assessment of the effectiveness of all corrective and preventative actions taken; and 8. describe the state of implementation of the proposal.						
753:M4.4		The proponent shall make the environmental compliance reports required by condition	The compliance reports will be made publicly available on MGI's	CR	CEO		Overall		Not required at this stage



## AUDIT TABLE

### Proposal Implementation Monitoring Section

**PROJECT:** MT GIBSON IRON ORE MINE &

INFRASTRUCTURE PROJECT SHIRE OF YALGOO

**PROPOSERS:** MOUNT GIBSON MINING LIMITED and

EXTENSION HILL PTY LTD

Number	Subject	Action	How	Evidence	Satisfy	Advice	Phase	When	Status
		4-1 publicly available in a manner approved by the CEO.	website and provided to DEC Library.						
753:M5.1	<b>Performance Review</b>	The proponent shall submit a Performance Review report every five years after the start of ground-disturbing activities to the Environmental Protection Authority,	Addresses: 1. the major environmental issues associated with implementing the project; the environmental objectives for those issues; the methodologies used to achieve these; and the key indicators of environmental performance measured against those objectives; 2. the level of progress in the achievement of sound environmental performance, including industry benchmarking, and the use of best available technology where	Performance Review report	EPA		Overall	Every five years after the start of ground-disturbing activities	Not required at this stage



## AUDIT TABLE

### Proposal Implementation Monitoring Section

**PROJECT:** MT GIBSON IRON ORE MINE &

INFRASTRUCTURE PROJECT SHIRE OF YALGOO

PROPOSERS: MOUNT GIBSON MINING LIMITED and

EXTENSION HILL PTY LTD

Number	Subject	Action	How	Evidence	Satisfy	Advice	Phase	When	Status
			practicable; 3. significant improvements gained in environmental management, including the use of external peer reviews; 4. stakeholder and community consultation about environmental performance and the outcomes of that consultation, including a report of any on-going concerns being expressed; and 5. the proposed environmental objectives over the next five years, including improvements in technology and management processes.						
753:M5.2	<b>Performance Review</b>	The proponent shall make the Performance Review	The Performance Review reports will	CR	CEO		Overall		Not required at





## AUDIT TABLE

### Proposal Implementation Monitoring Section

**PROJECT:** MT GIBSON IRON ORE MINE &

INFRASTRUCTURE PROJECT SHIRE OF YALGOO

PROPOSERS: MOUNT GIBSON MINING LIMITED and

EXTENSION HILL PTY LTD

Number	Subject	Action	How	Evidence	Satisfy	Advice	Phase	When	Status
		reports required by condition 5-1 publicly available in a manner approved by the CEO.	be made publicly available on MGI's website and provided to DEC Library.						this stage
753:M6.1	<b>Darwinia masonii Research and Recovery Plans</b>	Prior to the commencement of ground-disturbing activities for the mine site, the proponent shall prepare a <i>Darwinia masonii</i> Research Plan to the requirements of the Minister for the Environment on advice of the Environmental Protection Authority and the and the Department of Environment and Conservation.	This Plan shall set out a timetable, objectives and methodologies for research and measures to: 1. monitor the numbers of individuals of the species, their health, and reproductive success; 2. investigate the requirements for maintaining or improving the viability of the population through genetic and ecological factors relating to the conservation, management, restoration, propagation and	Conservation and Restoration Research Proposal <i>Darwinia masonii</i> and <i>Lepidosperma gibsonii</i>	Min for Env	EPA, DEC	Pre-Construction	Prior to the commencement of ground-disturbing activities for the mine site	Completed



## AUDIT TABLE

### Proposal Implementation Monitoring Section

**PROJECT:** MT GIBSON IRON ORE MINE &

INFRASTRUCTURE PROJECT SHIRE OF YALGOO

PROPOSERS: MOUNT GIBSON MINING LIMITED and

EXTENSION HILL PTY LTD

Number	Subject	Action	How	Evidence	Satisfy	Advice	Phase	When	Status
			translocation of the species; 3. provide a scientifically robust analysis of the habitat requirements of the species; 4. offset the direct impacts of the proposal on the local population of the species by regeneration, re-establishment or translocation of additional plants or subpopulations on suitable un-impacted areas of banded ironstone formations in the Mt Gibson area; and 5. provide information which, combined with the results of monitoring activities required by condition 8, assists in ensuring that mining and other activities of the proposal,						



## AUDIT TABLE

### Proposal Implementation Monitoring Section

**PROJECT:** MT GIBSON IRON ORE MINE &

INFRASTRUCTURE PROJECT SHIRE OF YALGOO

PROPOSERS: MOUNT GIBSON MINING LIMITED and

EXTENSION HILL PTY LTD

Number	Subject	Action	How	Evidence	Satisfy	Advice	Phase	When	Status
			particularly the generation of dust, do not lead to a further decline in the local population of the species.						
753:M6.2	<b>Darwinia masonii Research and Recovery Plans</b>	Prior to the commencement of ground-disturbing activities for the mine site, the proponent shall prepare an Interim Recovery Plan for <i>Darwinia masonii</i> , to the requirements of the Minister for the Environment on advice of the Environmental Protection Authority and the Department of Environment and Conservation.	This Plan shall include a timetable for and actions to: 1. locate and report any additional populations of the species; 2. enhance the survival of existing populations of the species; and 3. expand the existing populations or establish new populations; based on currently available information and the results of early research and experimentation undertaken in accordance with condition 6-1.	<i>Darwinia masonii</i> Interim Recovery Plan	Min for Env	EPA, DEC	Pre-Construction	Prior to the commencement of ground-disturbing activities for the mine site	Completed



## AUDIT TABLE

### Proposal Implementation Monitoring Section

**PROJECT:** MT GIBSON IRON ORE MINE &

INFRASTRUCTURE PROJECT SHIRE OF YALGOO

PROPOSERS: MOUNT GIBSON MINING LIMITED and

EXTENSION HILL PTY LTD

Number	Subject	Action	How	Evidence	Satisfy	Advice	Phase	When	Status
753:M6.3	<b><i>Darwinia masonii</i> Research and Recovery Plans</b>	Within four years following the commencement of ground-disturbing activities for the mine site, the proponent shall prepare a Recovery Plan for <i>Darwinia masonii</i> to the requirements of the Minister for the Environment on advice of the Environmental Protection Authority and the Department of Environment and Conservation.	This Plan shall identify: 1. habitats which are critical to the survival of the species and the actions needed to protect those habitats; 2. threats to the species, and areas and populations under threat; 3. objectives to be achieved; 4. criteria against which achievement of the objectives is to be measured; 5. management actions, based on the outcomes of the implementation of the Research Plan referred to in Condition 6-1 and the Interim Recovery Plan referred to in Condition 6-2 that will remediate the impacts of the	<i>Darwinia masonii</i> Recovery Plan	Min for Env	EPA, DEC	Construction	Within four years following the commencement of ground-disturbing activities for the mine site	Not required at this stage



## AUDIT TABLE

### Proposal Implementation Monitoring Section

**PROJECT:** MT GIBSON IRON ORE MINE &

INFRASTRUCTURE PROJECT SHIRE OF YALGOO

PROPOSERS: MOUNT GIBSON MINING LIMITED and

EXTENSION HILL PTY LTD

Number	Subject	Action	How	Evidence	Satisfy	Advice	Phase	When	Status
			<p>project and provide for a net improvement on the pre-mining conservation status of the species; and 6. further research required into the management or recovery of the species, and shall be consistent with the requirements of the current version of the "Recovery Plan Guidelines for Nationally Listed Threatened Species and Ecological Communities under the Commonwealth <i>Environment Protection and Biodiversity Conservation Act 1999</i>" (published on the Commonwealth Department of Environment and</p>						

## AUDIT TABLE

### Proposal Implementation Monitoring Section

**PROJECT:** MT GIBSON IRON ORE MINE &

INFRASTRUCTURE PROJECT SHIRE OF YALGOO

PROPOSENTS: MOUNT GIBSON MINING LIMITED and

EXTENSION HILL PTY LTD

Number	Subject	Action	How	Evidence	Satisfy	Advice	Phase	When	Status
			Heritage website).						
753:M6.4	<b>Darwinia masonii Research and Recovery Plans</b>	The proponent shall implement the <i>Darwinia masonii</i> Research Plan required by condition 6-1.	BGPA has been commissioned to undertake the Research outlined in the Conservation and Restoration Research Proposal <i>Darwinia masonii</i> and <i>Lepidosperma gibsonii</i> .	CR, BGPA reports.	Min for Env		Overall		Satisfactory during this period
753:M6.5	<b>Darwinia masonii Research and Recovery Plans</b>	The proponent shall implement the Interim Recovery Plan for <i>Darwinia masonii</i> required by condition 6-2.	Implementation of the relevant recovery actions, as detailed in the <i>Darwinia masonii</i> Interim Recovery Plan.	CR	Min for Env		Overall		Satisfactory during this period
753:M6.6	<b>Darwinia masonii Research and Recovery Plans</b>	The proponent shall implement the Recovery Plan for <i>Darwinia masonii</i> required by condition 6-3.	Implementation of the relevant recovery actions, as detailed in the <i>Darwinia masonii</i> Recovery Plan.	CR	Min for Env		Overall		Not required at this stage
753:M6.7	<b>Darwinia masonii Research and Recovery Plans</b>	The proponent shall review and revise the <i>Darwinia masonii</i> Research and Recovery Plans required by conditions 6-1, 6-2 and 6-3	The proponent will review and revise the Conservation and Restoration Research Proposal <i>Darwinia masonii</i>	Conservation and Restoration Research Proposal <i>Darwinia</i>	CEO		Overall	When directed by the CEO.	Not required at this stage

## AUDIT TABLE

### Proposal Implementation Monitoring Section

**PROJECT:** MT GIBSON IRON ORE MINE &

INFRASTRUCTURE PROJECT SHIRE OF YALGOO

PROPOSERS: MOUNT GIBSON MINING LIMITED and

EXTENSION HILL PTY LTD

Number	Subject	Action	How	Evidence	Satisfy	Advice	Phase	When	Status
		as and when directed by the CEO.	and <i>Lepidosperma gibsonii</i> ; <i>Darwinia masonii</i> Interim Recovery Plan and <i>Darwinia masonii</i> Recovery Plan, as and when directed by the CEO.	<i>masonii</i> and <i>Lepidosperma gibsonii</i> ; <i>Darwinia masonii</i> Interim Recovery Plan; <i>Darwinia masonii</i> Recovery Plan					
753:M6.8	<b><i>Darwinia masonii</i> Research and Recovery Plans</b>	The proponent shall implement revisions of the <i>Darwinia masonii</i> Research and Recovery Plans required by condition 6-7.	The revised Conservation and Restoration Research Proposal <i>Darwinia masonii</i> and <i>Lepidosperma gibsonii</i> ; <i>Darwinia masonii</i> Interim Recovery Plan and <i>Darwinia masonii</i> Recovery Plan, will be implemented if and when these revisions are finalised.	CR	CEO		Overall		Not required at this stage
753:M6.9	<b><i>Darwinia masonii</i> Research and Recovery Plans</b>	The proponent shall make the <i>Darwinia masonii</i> Research Plan required by condition 6-1 and revisions required by condition 6-7 publicly available in a	The Conservation and Restoration Research Proposal <i>Darwinia masonii</i> and <i>Lepidosperma gibsonii</i> is publicly	CR, Access to the plan from the MGI website and DEC library	CEO		Overall		Satisfactory during this period

## AUDIT TABLE

### Proposal Implementation Monitoring Section

**PROJECT:** MT GIBSON IRON ORE MINE &

INFRASTRUCTURE PROJECT SHIRE OF YALGOO

PROPOSERS: MOUNT GIBSON MINING LIMITED and

EXTENSION HILL PTY LTD

Number	Subject	Action	How	Evidence	Satisfy	Advice	Phase	When	Status
		manner approved by the CEO.	available on MGI's website and will be provided to DEC Library.						
753:M6.10	<b>Darwinia masonii Research and Recovery Plans</b>	The proponent shall make the Interim Recovery Plan for <i>Darwinia masonii</i> required by condition 6-2 and revisions required by condition 6-7 publicly available in a manner approved by the CEO.	The <i>Darwinia masonii</i> Interim Recovery Plan is publicly available on MGI's website and will be provided to DEC Library.	CR, Access to the plan from the MGI website and DEC library	CEO		Overall		Satisfactory during this period
753:M6.11	<b>Darwinia masonii Research and Recovery Plans</b>	The proponent shall make the Recovery Plan for <i>Darwinia masonii</i> required by condition 6-3 and revisions required by condition 6-7 publicly available in a manner approved by the CEO.	The <i>Darwinia masonii</i> Recovery Plan will be made publicly available on MGI's website and will be provided to DEC Library.	CR, Access to the plan from the MGI website and DEC library	CEO		Overall		Not required at this stage
753:M7.1	<b>Lepidosperma sp. Mt Gibson - Research and Recovery Plans</b>	Prior to the commencement of ground-disturbing activities for the mine site, the proponent shall prepare a <i>Lepidosperma</i> sp. Mt Gibson Research Plan to the requirements of the Minister for the Environment on advice of the Environmental	This Plan shall set out a timetable, objectives and methodologies for research and measures to: 1. monitor the numbers of individuals of the species, their health, and	Conservation and Restoration Research Proposal <i>Darwinia masonii</i> and <i>Lepidosperma gibsonii</i> Plan	Min for Env	EPA, DEC	Pre-Construction	Prior to the commencement of ground-disturbing activities for the mine site	Completed





# AUDIT TABLE

## Proposal Implementation Monitoring Section

**PROJECT:** MT GIBSON IRON ORE MINE &

INFRASTRUCTURE PROJECT SHIRE OF YALGOO

PROPOSERS: MOUNT GIBSON MINING LIMITED and

EXTENSION HILL PTY LTD

Number	Subject	Action	How	Evidence	Satisfy	Advice	Phase	When	Status
		Protection Authority and the Department of Environment and Conservation.	reproductive success; 2. investigate the requirements for maintaining or improving viability of the population through genetic and ecological factors relating to the conservation, management, restoration, propagation and translocation of the species; 3. provide a scientifically robust analysis of the habitat requirements of the species; 4. offset the direct impacts of the proposal on the local population of the species by regeneration, re-establishment or translocation of additional plants or subpopulations on suitable un-						

## AUDIT TABLE

### Proposal Implementation Monitoring Section

**PROJECT:** MT GIBSON IRON ORE MINE &

INFRASTRUCTURE PROJECT SHIRE OF YALGOO

PROPOSERS: MOUNT GIBSON MINING LIMITED and

EXTENSION HILL PTY LTD

Number	Subject	Action	How	Evidence	Satisfy	Advice	Phase	When	Status
			impacted areas of banded ironstone formations in the Mt Gibson area; and 5. provide information which, combined with the results of monitoring activities required by condition 8, assists in ensuring that mining and other activities of the proposal, particularly the generation of dust, do not lead to a further decline in the local population of the species.						
753:M7.2	<b>Lepidosperma sp. Mt Gibson - Research and Recovery Plans</b>	Prior to the commencement of ground-disturbing activities for the mine site, the proponent shall prepare an Interim Recovery Plan for <i>Lepidosperma</i> sp. Mt Gibson, to the requirements of the Minister for the Environment on advice of	This Plan shall include a timetable for and actions to: 1. locate and report any additional populations of the species; 2. enhance the survival of existing populations of the species; and 3.	<i>Lepidosperma gibsonii</i> Interim Recovery Plan	Min for Env	EPA, DEC	Pre-Construction	Prior to the commencement of ground-disturbing activities for the mine site	Completed

## AUDIT TABLE

### Proposal Implementation Monitoring Section

**PROJECT:** MT GIBSON IRON ORE MINE &

INFRASTRUCTURE PROJECT SHIRE OF YALGOO

PROPOSERS: MOUNT GIBSON MINING LIMITED and

EXTENSION HILL PTY LTD

Number	Subject	Action	How	Evidence	Satisfy	Advice	Phase	When	Status
		the Environmental Protection Authority and the Department of Environment and Conservation.	expand the existing populations or establish new populations; based on currently available information and the results of early research and experimentation undertaken in accordance with condition 7-1.						
753:M7.3	<b>Lepidosperma sp. Mt Gibson - Research and Recovery Plans</b>	Within four years following the commencement of ground-disturbing activities for the mine site, the proponent shall prepare a Recovery Plan for <i>Lepidosperma</i> sp. Mt Gibson to the requirements of the Minister for the Environment on advice of the Environment Protection Authority and the Department of Environment and Conservation.	This Plan shall identify: 1. habitats which are critical to the survival of the species and the actions needed to protect those habitats; 2. threats to the species, and areas and populations under threat; 3. objectives to be achieved; 4. criteria against which achievement of the objectives is to be measured; 5.	<i>Lepidosperma gibsonii</i> Recovery Plan	Min for Env	EPA, DEC	Construction	Within four years following the commencement of ground-disturbing activities for the mine site	Not required at this stage



## AUDIT TABLE

### Proposal Implementation Monitoring Section

**PROJECT:** MT GIBSON IRON ORE MINE &

INFRASTRUCTURE PROJECT SHIRE OF YALGOO

PROPOSERS: MOUNT GIBSON MINING LIMITED and

EXTENSION HILL PTY LTD

Number	Subject	Action	How	Evidence	Satisfy	Advice	Phase	When	Status
			management actions, based on the outcomes of the Research Plan referred to in Condition 7-1 and the Interim Recovery Plan referred to in Condition 7-2 that will to remediate the impacts of the project and provide for a net improvement on the pre-mining conservation status of the species; and 6. further research required into the management or recovery of the species, and shall be consistent with the requirements of the current version of the "Recovery Plan Guidelines for Nationally Listed Threatened Species and						

## AUDIT TABLE

### Proposal Implementation Monitoring Section

**PROJECT:** MT GIBSON IRON ORE MINE &

INFRASTRUCTURE PROJECT SHIRE OF YALGOO

PROPOSERS: MOUNT GIBSON MINING LIMITED and

EXTENSION HILL PTY LTD

Number	Subject	Action	How	Evidence	Satisfy	Advice	Phase	When	Status
			Ecological Communities under the Commonwealth <i>Environment Protection and Biodiversity Conservation Act 1999</i> (published on the Commonwealth Department of Environment and Heritage website).						
753:M7.4	<b>Lepidosperma sp. Mt Gibson - Research and Recovery Plans</b>	The proponent shall implement a <i>Lepidosperma sp. Mt Gibson</i> Research Plan required by condition 7-1.	BGPA has been commissioned to undertake the Research outlined in the Conservation and Restoration Research Proposal <i>Darwinia masonii</i> and <i>Lepidosperma gibsonii</i> .	CR, BGPA reports.	Min for Env		Overall		Satisfactory during this period
753:M7.5	<b>Lepidosperma sp. Mt Gibson - Research and Recovery Plans</b>	The proponent shall implement the Interim Recovery Plan for <i>Lepidosperma sp. Mt Gibson</i> required by condition 7-2.	Implementation of the relevant recovery actions, as detailed in the <i>Lepidosperma gibsonii</i> Interim	CR	Min for Env		Overall		Satisfactory during this period

## AUDIT TABLE

### Proposal Implementation Monitoring Section

**PROJECT:** MT GIBSON IRON ORE MINE &

INFRASTRUCTURE PROJECT SHIRE OF YALGOO

PROPOSERS: MOUNT GIBSON MINING LIMITED and

EXTENSION HILL PTY LTD

Number	Subject	Action	How	Evidence	Satisfy	Advice	Phase	When	Status
			Recovery Plan.						
753:M7.6	<b>Lepidosperma sp. Mt Gibson - Research and Recovery Plans</b>	The proponent shall implement the Recovery Plan for <i>Lepidosperma</i> sp. Mt Gibson required by condition 7-3.	Implementation of the relevant recovery actions, as detailed in the <i>Lepidosperma gibsonii</i> Recovery Plan.	CR	Min for Env		Overall		Not required at this stage
753:M7.7	<b>Lepidosperma sp. Mt Gibson - Research and Recovery Plans</b>	The proponent shall review and revise the <i>Lepidosperma</i> sp. Mt Gibson Research and Recovery Plans required by conditions 7-1, 7-2 and 7-3 as and when directed by the CEO.	The proponent will review and revise the Conservation and Restoration Research Proposal <i>Darwinia masonii</i> and <i>Lepidosperma gibsonii</i> ; <i>Lepidosperma gibsonii</i> Interim Recovery Plan and <i>Lepidosperma gibsonii</i> Recovery Plan as and when directed by the CEO.	Conservation and Restoration Research Proposal <i>Darwinia masonii</i> and <i>Lepidosperma gibsonii</i> ; <i>Lepidosperma gibsonii</i> Interim Recovery Plan; <i>Lepidosperma gibsonii</i> Recovery Plan	CEO		Overall	and when directed by the CEO	Not required at this stage
753:M7.8	<b>Lepidosperma sp. Mt Gibson - Research and Recovery Plans</b>	The proponent shall implement revisions of the <i>Lepidosperma</i> sp. Mt Gibson Research and Recovery Plans required by condition 7-7.	The revised Conservation and Restoration Research Proposal <i>Darwinia masonii</i> and <i>Lepidosperma</i>	CR	CEO		Overall		Not required at this stage

## AUDIT TABLE

### Proposal Implementation Monitoring Section

**PROJECT:** MT GIBSON IRON ORE MINE &

INFRASTRUCTURE PROJECT SHIRE OF YALGOO

PROPOSERS: MOUNT GIBSON MINING LIMITED and

EXTENSION HILL PTY LTD

Number	Subject	Action	How	Evidence	Satisfy	Advice	Phase	When	Status
			<i>gibsonii</i> ; <i>Lepidosperma gibsonii</i> Interim Recovery Plan and <i>Lepidosperma gibsonii</i> Recovery Plan, will be implemented if and when these revisions are finalised.						
753:M7.9	<b><i>Lepidosperma</i> sp. Mt Gibson - Research and Recovery Plans</b>	The proponent shall make the <i>Lepidosperma</i> sp. Mt Gibson Research Plan required by condition 7-1 and revisions required by condition 7-7 publicly available in a manner approved by the CEO.	The Conservation and Restoration Research Proposal <i>Darwinia masonii</i> and <i>Lepidosperma gibsonii</i> is publicly available on MGI's website and will be provided to DEC Library.	CR, Access to the plan from the MGI website and DEC library	CEO		Overall		Satisfactory during this period
753:M7.10	<b><i>Lepidosperma</i> sp. Mt Gibson - Research and Recovery Plans</b>	The proponent shall make the Interim Recovery Plan for <i>Lepidosperma</i> sp. Mt Gibson required by condition 7-2 and revisions required by condition 7-7 publicly available in a manner approved by the CEO.	The <i>Lepidosperma gibsonii</i> Interim Recovery Plan is publicly available on MGI's website and will be provided to DEC Library.	CR, Access to the plan from the MGI website and DEC library	CEO		Overall		Satisfactory during this period

## AUDIT TABLE

### Proposal Implementation Monitoring Section

**PROJECT:** MT GIBSON IRON ORE MINE &

INFRASTRUCTURE PROJECT SHIRE OF YALGOO

PROPOSERS: MOUNT GIBSON MINING LIMITED and

EXTENSION HILL PTY LTD

Number	Subject	Action	How	Evidence	Satisfy	Advice	Phase	When	Status
753:M7.11	<b>Lepidosperma sp. Mt Gibson - Research and Recovery Plans</b>	The proponent shall make the Recovery Plan for <i>Lepidosperma</i> sp. Mt Gibson required by condition 7-3 and revisions required by condition 7-7 publicly available in a manner approved by the CEO.	The <i>Lepidosperma gibsonii</i> Recovery Plan will be made publicly available on MGI's website and will be provided to DEC Library.	CR, Access to the plan from the MGI website and DEC library	CEO		Overall		Not required at this stage
753:M8.1	<b>Conservation of Significant Flora and Communities</b>	Prior to the commencement of ground-disturbing activities, the proponent shall prepare a Significant Flora Species and Communities Management Plan to the requirements of the Minister for the Environment on advice of the Environmental Protection Authority and the Department of Environment and Conservation. Note: "Significant flora species" include: Declared Rare Flora; Priority Listed Flora; geographically restricted flora; and newly discovered and undescribed flora.	The following species shall be addressed in the Plan: <ul style="list-style-type: none"> <li>• <i>Darwinia masonii</i>;</li> <li>• <i>Lepidosperma</i> sp. Mt Gibson;</li> <li>• <i>Acacia cerastes</i>;</li> <li>• <i>Grevillea aff. yorkkrakinensis</i>;</li> <li>• <i>Cryptandra imbricata</i>;</li> <li>• <i>Podotheca uniseta</i>; and</li> <li>• <i>Psammomoya implexa</i>.</li> </ul> Note: "Significant communities" include: Threatened Ecological Communities;	Extension Hill & Extension Hill North Environmental Management Plan (Rev 2)	Min for Env	EPA, DEC	Pre-Construction	Prior to the commencement of ground-disturbing activities	Completed





# AUDIT TABLE

## Proposal Implementation Monitoring Section

**PROJECT:** MT GIBSON IRON ORE MINE &

INFRASTRUCTURE PROJECT SHIRE OF YALGOO

PROPOSERS: MOUNT GIBSON MINING LIMITED and

EXTENSION HILL PTY LTD

Number	Subject	Action	How	Evidence	Satisfy	Advice	Phase	When	Status
			<p>Priority Ecological Communities; and geographically restricted ecological communities.</p> <p>This Plan shall: 1. provide the results of targeted flora and vegetation surveys where surveys have not been completed or where the result of previous surveys are no longer current, to provide further information on the conservation and baseline conservation status of each of the significant flora species and communities within the project area; 2. describe details of monitoring and management</p>						



## AUDIT TABLE

### Proposal Implementation Monitoring Section

**PROJECT:** MT GIBSON IRON ORE MINE &

INFRASTRUCTURE PROJECT SHIRE OF YALGOO

PROPOSERS: MOUNT GIBSON MINING LIMITED and

EXTENSION HILL PTY LTD

Number	Subject	Action	How	Evidence	Satisfy	Advice	Phase	When	Status
			activities to ensure that the proposal does not lead, directly or indirectly, to the taking of significant flora beyond the approved area of direct disturbance, including: <ul style="list-style-type: none"> <li>• monitoring of the numbers and population distribution of <i>Darwinia masonii</i> and <i>Lepidosperma</i> sp. Mt Gibson, their health and reproductive success; and</li> <li>• a detailed risk management plan setting out monitoring and management procedures, parameters, and schedules, and defining response triggers and acceptable</li> </ul>						



## AUDIT TABLE

### Proposal Implementation Monitoring Section

**PROJECT:** MT GIBSON IRON ORE MINE &

INFRASTRUCTURE PROJECT SHIRE OF YALGOO

PROPOSERS: MOUNT GIBSON MINING LIMITED and

EXTENSION HILL PTY LTD

Number	Subject	Action	How	Evidence	Satisfy	Advice	Phase	When	Status
			<p>performance criteria for the avoidance and management of potential indirect impacts of mining activities, including, the impacts of dust deposition, fire, weeds, altered hydrology and unauthorised disturbance, on the populations of <i>Darwinia masonii</i> and <i>Lepidosperma</i> sp. Mt Gibson outside the mining footprint; Note: See also Weed Management Plan (condition 9) and Bush Fire Management Plan (condition 10). 3. describe measures to ensure that direct and indirect impacts on significant flora</p>						



# AUDIT TABLE

## Proposal Implementation Monitoring Section

**PROJECT:** MT GIBSON IRON ORE MINE &

INFRASTRUCTURE PROJECT SHIRE OF YALGOO

PROPOSERS: MOUNT GIBSON MINING LIMITED and

EXTENSION HILL PTY LTD

Number	Subject	Action	How	Evidence	Satisfy	Advice	Phase	When	Status
			species and communities within the mine site and along the services corridor are minimised; 4. describe measures to manage impacts of the mining operation on vegetation downstream of the mine site; 5. set out monitoring parameters, methods and criteria for establishing impact on significant flora species and communities within the mine site and along the services corridor; 6. outline the regeneration or revegetation strategies which may be required for significant flora species and components of						



## AUDIT TABLE

### Proposal Implementation Monitoring Section

**PROJECT:** MT GIBSON IRON ORE MINE &

INFRASTRUCTURE PROJECT SHIRE OF YALGOO

PROPOSERS: MOUNT GIBSON MINING LIMITED and

EXTENSION HILL PTY LTD

Number	Subject	Action	How	Evidence	Satisfy	Advice	Phase	When	Status
			<p>communities, including completion criteria to be met; 7. outline management or mitigation actions required to address any failure to achieve regeneration completion criteria arising from item 6 above; and 8. outline further investigations into the regeneration and reproductive ecology of affected significant flora species and components of communities, in order to determine appropriate regeneration methodologies, if the completion criteria are not being achieved.</p>						
753:M8.2	<b>Conservation of Significant</b>	The proponent shall implement the Significant	Implementation of the Extension Hill &	CR	Min for Env		Overall		Satisfactory during this

## AUDIT TABLE

### Proposal Implementation Monitoring Section

**PROJECT:** MT GIBSON IRON ORE MINE &

INFRASTRUCTURE PROJECT SHIRE OF YALGOO

PROPOSERS: MOUNT GIBSON MINING LIMITED and

EXTENSION HILL PTY LTD

Number	Subject	Action	How	Evidence	Satisfy	Advice	Phase	When	Status
	<b>Flora and Communities</b>	Flora Species and Communities Management Plan required by condition 8-1.	Extension Hill North Environmental Management Plan and underlying procedures and protocols.						period
753:M8.3	<b>Conservation of Significant Flora and Communities</b>	The proponent shall review and revise the Significant Flora Species and Communities Management Plan required by condition 8-1 as and when directed by the CEO.	The proponent will review and revise the Extension Hill & Extension Hill North Environmental Management Plan, as and when directed by the CEO.	Extension Hill & Extension Hill North Environmental Management Plan	CEO		Overall	When directed by the CEO	Not required at this stage
753:M8.4	<b>Conservation of Significant Flora and Communities</b>	The proponent shall implement revisions of the Significant Flora Species and Communities Management Plan required by condition 8-3.	Revisions of the Extension Hill & Extension Hill North Environmental Management Plan will be implemented if and when they are finalised.	CR	CEO		Overall		Not required at this stage
753:M8.5	<b>Conservation of Significant Flora and Communities</b>	The proponent shall make the Significant Flora Species and Communities Management Plan required by condition 8-1 and revisions required by condition 8-3 publicly available in a manner	The Extension Hill & Extension Hill North Environmental Management Plan is publicly available on MGI's website and will be	CR, Access to the plan from the MGI website and DEC library	CEO		Overall		Satisfactory during this period



## AUDIT TABLE

### Proposal Implementation Monitoring Section

**PROJECT:** MT GIBSON IRON ORE MINE &

INFRASTRUCTURE PROJECT SHIRE OF YALGOO

PROPOSERS: MOUNT GIBSON MINING LIMITED and

EXTENSION HILL PTY LTD

Number	Subject	Action	How	Evidence	Satisfy	Advice	Phase	When	Status
		approved by the CEO.	provided to DEC Library.						
753:M9.1	<b>Weeds</b>	Prior to the commencement of ground-disturbing activities, the proponent shall prepare, in consultation with the Department of Environment and Conservation and the Department of Agriculture and Food, a Weed Management Plan.	This Plan shall: 1. identify the location and approximate number of each weed species recorded within the mine site and along the services corridor, during previous vegetation surveys, while having regard for weed species outside the project area; 2. identify weeds of environmental significance in the project area as target weeds in collaboration with the Department of Environment and Conservation; 3. map the presence of target weeds; 4. implement appropriate hygiene practices	Extension Hill & Extension Hill North Environmental Management Plan (Rev 2)	Min for Env	DoAF, DEC	Pre-Construction	Prior to the commencement of ground-disturbing activities	Completed



## AUDIT TABLE

### Proposal Implementation Monitoring Section

**PROJECT:** MT GIBSON IRON ORE MINE &

INFRASTRUCTURE PROJECT SHIRE OF YALGOO

PROPOSERS: MOUNT GIBSON MINING LIMITED and

EXTENSION HILL PTY LTD

Number	Subject	Action	How	Evidence	Satisfy	Advice	Phase	When	Status
			for all plant and vehicle equipment operated by the proponent; 5. control and eradicate target weeds during construction and operation of the mine site and construction of the services corridor; 6. identify performance indicators for weed management; and 7. monitor the success of weed control.						
753:M9.2	<b>Weeds</b>	The proponent shall implement the Weed Management Plan required by condition 9-1.	Implementation of the Extension Hill & Extension Hill North Environmental Management Plan and underlying procedures and protocols.	CR	Min for Env		Overall		Satisfactory during this period
753:M9.3	<b>Weeds</b>	The proponent shall review and revise the Weed Management Plan	The proponent will review and revise the Extension Hill &	Extension Hill & Extension Hill North	CEO		Overall		Not required at this stage



## AUDIT TABLE

### Proposal Implementation Monitoring Section

**PROJECT:** MT GIBSON IRON ORE MINE &

INFRASTRUCTURE PROJECT SHIRE OF YALGOO

PROPOSERS: MOUNT GIBSON MINING LIMITED and

EXTENSION HILL PTY LTD

Number	Subject	Action	How	Evidence	Satisfy	Advice	Phase	When	Status
		required by condition 9-1 as and when directed by the CEO.	Extension Hill North Environmental Management Plan, as and when directed by the CEO.	Environmental Management Plan					
753:M9.4	<b>Weeds</b>	The proponent shall implement revisions of the Weed Management Plan required by condition 9-3.	Revisions of the Extension Hill & Extension Hill North Environmental Management Plan will be implemented if and when they are finalised.	CR	CEO		Overall		Not required at this stage
753:M9.5	<b>Weeds</b>	The proponent shall make the Weed Management Plan required by condition 9-1 and revisions required by condition 9-3 publicly available in a manner approved by the CEO.	The Extension Hill & Extension Hill North Environmental Management Plan is publicly available on MGI's website and will be provided to DEC Library.	CR, Access to the plan from the MGI website and DEC library	CEO		Overall		Satisfactory during this period
753:M10.1	<b>Bush Fires</b>	Prior to the commencement of ground-disturbing activities, the proponent shall prepare, in consultation with the Department of Environment and	This Plan shall set out the provision of resources and measures to: 1. prevent bushfires in the vicinity of the mine site;	Extension Hill & Extension Hill North Environmental Management Plan (Rev 2)	DEC	LGA	Pre-Construction	Prior to the commencement of ground-disturbing activities	Completed

## AUDIT TABLE

### Proposal Implementation Monitoring Section

**PROJECT:** MT GIBSON IRON ORE MINE &

INFRASTRUCTURE PROJECT SHIRE OF YALGOO

PROPOSERS: MOUNT GIBSON MINING LIMITED and

EXTENSION HILL PTY LTD

Number	Subject	Action	How	Evidence	Satisfy	Advice	Phase	When	Status
		Conservation and the relevant Local Governments, a Bush Fire Management Plan.	2. detect bushfires in the vicinity of the mine site; 3. train personnel to fight fires in the vicinity of the mine site; and 4. respond to bush fire emergencies.						
753:M10.2	<b>Bush Fires</b>	The proponent shall implement the Bush Fire Management Plan required by condition 10-1.	Implementation of the Extension Hill & Extension Hill North Environmental Management Plan and underlying procedures and protocols.	CR	CEO		Overall		Satisfactory during this period
753:M10.3	<b>Bush Fires</b>	The proponent shall review and revise the Bush Fire Management Plan required by condition 10-1 as and when directed by the CEO.	The proponent will review and revise the Extension Hill & Extension Hill North Environmental Management Plan, as and when directed by the CEO.	Extension Hill & Extension Hill North Environmental Management Plan	CEO		Overall	When directed by the CEO.	Not required at this stage
753:M10.4	<b>Bush Fires</b>	The proponent shall implement revisions of the Bush Fire Management Plan required by condition	Revisions of the Extension Hill & Extension Hill North Environmental	CR	CEO		Overall		Not required at this stage

## AUDIT TABLE

### Proposal Implementation Monitoring Section

**PROJECT:** MT GIBSON IRON ORE MINE &

INFRASTRUCTURE PROJECT SHIRE OF YALGOO

PROPOSERS: MOUNT GIBSON MINING LIMITED and

EXTENSION HILL PTY LTD

Number	Subject	Action	How	Evidence	Satisfy	Advice	Phase	When	Status
		10-3.	Management Plan will be implemented if and when they are finalised.						
753:M10.5	<b>Bush Fires</b>	The proponent shall make the Bush Fire Management Plan required by condition 10-1 and revisions required by condition 10-3 publicly available in a manner approved by the CEO.	The Extension Hill & Extension Hill North Environmental Management Plan is publicly available on MGI's website and will be provided to DEC Library.	CR, Access to the plan from the MGI website and DEC library	CEO		Overall		Satisfactory during this period
753:M11.1	<b>Malleefowl <i>Leipoa ocellata</i></b>	Prior to the commencement of ground-disturbing activities, the proponent shall prepare, in consultation with the Department of Environment and Conservation, a Malleefowl Conservation Plan.	This Plan shall: 1. identify the distribution and abundance of <i>Leipoa ocellata</i> (Malleefowl) within and around the project area, including the services corridor; 2. Identify the threats to the Malleefowl populations in the areas identified in item 1 above; 3. Identify management	Extension Hill & Extension Hill North Environmental Management Plan (Rev 2)	CEO		Pre-Construction	Prior to the commencement of ground-disturbing activities	Completed



## AUDIT TABLE

### Proposal Implementation Monitoring Section

**PROJECT:** MT GIBSON IRON ORE MINE &

INFRASTRUCTURE PROJECT SHIRE OF YALGOO

PROPOSERS: MOUNT GIBSON MINING LIMITED and

EXTENSION HILL PTY LTD

Number	Subject	Action	How	Evidence	Satisfy	Advice	Phase	When	Status
			objectives and actions to minimise impacts on Malleefowl from the threats identified in item 2 above, including feral animal control and investigations into avoiding mounds being used by Mallee fowl; 4. identify a monitoring program to assess the Mallee fowl population and any impacts as a result of the proposal; and 5. Identify measures for community involvement in Mallee fowl conservation.						
753:M11.2	<b>Malleefowl</b> <i>Leipoa ocellata</i>	The proponent shall implement the Mallee fowl Conservation Plan required by condition 11-1.	Implementation of the Extension Hill & Extension Hill North Environmental Management Plan and underlying	CR	CEO		Overall		Satisfactory during this period

## AUDIT TABLE

### Proposal Implementation Monitoring Section

**PROJECT:** MT GIBSON IRON ORE MINE &

INFRASTRUCTURE PROJECT SHIRE OF YALGOO

PROPOSERS: MOUNT GIBSON MINING LIMITED and

EXTENSION HILL PTY LTD

Number	Subject	Action	How	Evidence	Satisfy	Advice	Phase	When	Status
			procedures and protocols.						
753:M11.3	<b>Malleefowl</b> <i>Leipoa ocellata</i>	The proponent shall review and revise the Mallee fowl Conservation Plan required by condition 11-1 as and when directed by the CEO.	The proponent will review and revise the Extension Hill & Extension Hill North Environmental Management Plan, as and when directed by the CEO.	Extension Hill & Extension Hill North Environmental Management Plan	CEO		Overall	When directed by the CEO.	Not required at this stage
753:M11.4	<b>Malleefowl</b> <i>Leipoa ocellata</i>	The proponent shall implement revisions of the Mallee fowl Conservation Plan required by condition 11-3.	Revisions of the Extension Hill & Extension Hill North Environmental Management Plan will be implemented if and when they are finalised.	CR	CEO		Overall		Not required at this stage
753:M11.5	<b>Malleefowl</b> <i>Leipoa ocellata</i>	The proponent shall make the Mallee fowl Conservation Plan required by condition 11-1 and revisions required by condition 11-3 publicly available in a manner approved by the CEO.	The Extension Hill & Extension Hill North Environmental Management Plan is publicly available on MGI's website and will be provided to DEC Library.	CR, Access to the plan from the MGI website and DEC library	CEO		Overall		Satisfactory during this period
753:M12.1	<b>Fauna Management at</b>	Prior to the commencement of ground-	This Plan shall address	Extension Hill & Extension	CEO		Pre-Construction	Prior to the commencement	Completed



## AUDIT TABLE

### Proposal Implementation Monitoring Section

**PROJECT:** MT GIBSON IRON ORE MINE &

INFRASTRUCTURE PROJECT SHIRE OF YALGOO

PROPOSERS: MOUNT GIBSON MINING LIMITED and

EXTENSION HILL PTY LTD

Number	Subject	Action	How	Evidence	Satisfy	Advice	Phase	When	Status
	the Mine Site	disturbing activities for the mine site, the proponent shall prepare in consultation with the Department of Environment and Conservation, a Mine Site Fauna Management Plan.	management and monitoring to: 1. demonstrate that the effects of vegetation clearing, noise and vibration, light overspill and vehicle movement on fauna are minimised; and 2. in particular, management and monitoring of <i>Egernia stokesii badia</i> (Western spiny-tailed skink); <i>Falco peregrinus</i> (Peregrine Falcon); <i>Cacatua leadbeateri</i> (Major Mitchell's Cockatoo); and <i>Merops ornatus</i> (Rainbow Bee-eater). Note: The management of Mallee fowl is considered in a separate Mallee fowl Conservation Plan (condition 11).	Hill North Environmental Management Plan (Rev 2)				ent of ground-disturbing activities for the mine site	

## AUDIT TABLE

### Proposal Implementation Monitoring Section

**PROJECT:** MT GIBSON IRON ORE MINE &

INFRASTRUCTURE PROJECT SHIRE OF YALGOO

PROPOSERS: MOUNT GIBSON MINING LIMITED and

EXTENSION HILL PTY LTD

Number	Subject	Action	How	Evidence	Satisfy	Advice	Phase	When	Status
753:M12.2	<b>Fauna Management at the Mine Site</b>	The proponent shall implement the Mine Site Fauna Management Plan required by condition 12-1.	Implementation of the Extension Hill & Extension Hill North Environmental Management Plan and underlying procedures and protocols.	CR	CEO		Overall		Satisfactory during this period
753:M12.3	<b>Fauna Management at the Mine Site</b>	The proponent shall review and revise the Mine Site Fauna Management Plan required by condition 12-1 as and when directed by the CEO.	The proponent will review and revise the Extension Hill & Extension Hill North Environmental Management Plan, as and when directed by the CEO.	Extension Hill & Extension Hill North Environmental Management Plan	CEO		Overall	When directed by the CEO.	Not required at this stage
753:M12.4	<b>Fauna Management at the Mine Site</b>	The proponent shall implement revisions of the Mine Site Fauna Management Plan required by condition 12-3.	Revisions of the Extension Hill & Extension Hill North Environmental Management Plan will be implemented if and when they are finalised.	CR	CEO		Overall		Not required at this stage
753:M12.5	<b>Fauna Management at the Mine Site</b>	The proponent shall make the Mine Site Fauna Management Plan required by condition 12-1 and revision required by condition 12-3 publicly	The Extension Hill & Extension Hill North Environmental Management Plan is publicly available	CR, Access to the plan from the MGI website and DEC library	CEO		Overall		Satisfactory during this period

## AUDIT TABLE

### Proposal Implementation Monitoring Section

**PROJECT:** MT GIBSON IRON ORE MINE &

INFRASTRUCTURE PROJECT SHIRE OF YALGOO

PROPOSERS: MOUNT GIBSON MINING LIMITED and

EXTENSION HILL PTY LTD

Number	Subject	Action	How	Evidence	Satisfy	Advice	Phase	When	Status
		available in a manner approved by the CEO.	on MGI's website and will be provided to DEC Library.						
753:M13.1	<b>Fauna Management along the Services Corridor</b>	Prior to ground-disturbing activities of the Services Corridor, the proponent shall clearly delineate on the ground the boundaries of the services corridor, being up to 20 metres wide from Geraldton Port to Monger's Lake (agricultural section) and up to 15 metres wide from Monger's Lake to the mine site (pastoral section).		CR, Extension Hill & Extension Hill North Environmental Management Plan (Rev 2)	CEO		Pre-Construction	Prior to ground-disturbing activities of the Services Corridor.	Not required at this stage
753:M13.2	<b>Fauna Management along the Services Corridor</b>	The proponent shall not cause or allow disturbance of vegetation outside the delineated services corridor referred to in condition 13-1, unless authorised by the Minister for the Environment.		CR, Extension Hill & Extension Hill North Environmental Management Plan (Rev 2)	Min for Env		Construction		Not required at this stage
753:M13.3	<b>Fauna Management along the Services Corridor</b>	The proponent shall undertake open trench works in the pastoral section of the services corridor from April to September (inclusive)		CR, Extension Hill & Extension Hill North Environmental Management	CEO		Construction	From April to September (inclusive) unless otherwise authorised by	Not required at this stage



## AUDIT TABLE

### Proposal Implementation Monitoring Section

**PROJECT:** MT GIBSON IRON ORE MINE &

INFRASTRUCTURE PROJECT SHIRE OF YALGOO

PROPOSERS: MOUNT GIBSON MINING LIMITED and

EXTENSION HILL PTY LTD

Number	Subject	Action	How	Evidence	Satisfy	Advice	Phase	When	Status
		unless otherwise authorised by the CEO.		Plan (Rev 2)				the CEO.	
753:M13.4	<b>Fauna Management along the Services Corridor</b>	Prior to vegetation clearing, the proponent shall mark significant habitat trees of sufficient age to form nesting hollows for hollow-nesting birds and mammals, and Mallee fowl mounds, in consultation with the Department of Environment and Conservation.		CR, Extension Hill & Extension Hill North Environmental Management Plan (Rev 2)	DEC		Pre-Construction	Prior to vegetation clearing	Not required at this stage
753:M13.5	<b>Fauna Management along the Services Corridor</b>	The proponent shall not fell marked trees or disturb mounds referred to in condition 13-4, except in the case where habitat trees or mounds occur in the direct line of the proposed pipeline and cannot reasonably be avoided.		CR, Extension Hill & Extension Hill North Environmental Management Plan (Rev 2)	CEO		Construction		Not required at this stage
753:M13.6	<b>Fauna Management along the Services Corridor</b>	The proponent shall limit the length of open trench to a maximum length of 10 kilometres at any time in the pastoral section and 20 kilometres at any time		CR, Extension Hill & Extension Hill North Environmental Management	CEO		Construction	At any time in the agricultural section of the services corridor.	Not required at this stage

## AUDIT TABLE

### Proposal Implementation Monitoring Section

**PROJECT:** MT GIBSON IRON ORE MINE &

INFRASTRUCTURE PROJECT SHIRE OF YALGOO

PROPOSERS: MOUNT GIBSON MINING LIMITED and

EXTENSION HILL PTY LTD

Number	Subject	Action	How	Evidence	Satisfy	Advice	Phase	When	Status
		in the agricultural section of the services corridor.		Plan (Rev 2)					
753:M13.7	<b>Fauna Management along the Services Corridor</b>	No part of the trench shall remain open for more than seven days, unless authorised by the CEO.		CR, Extension Hill & Extension Hill North Environmental Management Plan (Rev 2)	CEO		Construction		Not required at this stage
70 753:M13.8	<b>Fauna Management along the Services Corridor</b>	The proponent shall install ramps at intervals of 500 metres along the entire route of the open trench to allow trapped animals to escape, except in remnant vegetation patches in the agricultural section, where each remnant vegetation patch shall have at least one ramp.		CR, Extension Hill & Extension Hill North Environmental Management Plan (Rev 2)	CEO		Construction		Not required at this stage
753:M13.9	<b>Fauna Management along the Services Corridor</b>	The proponent shall employ at least two "fauna clearing persons" per ten kilometres of open trench to remove fauna from the trench. The "fauna clearing persons" shall be able to demonstrate suitable experience to obtain a fauna handling licence		CR, Extension Hill & Extension Hill North Environmental Management Plan (Rev 2)	CEO		Construction		Not required at this stage

## AUDIT TABLE

### Proposal Implementation Monitoring Section

**PROJECT:** MT GIBSON IRON ORE MINE &

INFRASTRUCTURE PROJECT SHIRE OF YALGOO

PROPOSERS: MOUNT GIBSON MINING LIMITED and

EXTENSION HILL PTY LTD

Number	Subject	Action	How	Evidence	Satisfy	Advice	Phase	When	Status
		issued by the Department of Environment and Conservation.							
753:M13.10	<b>Fauna Management along the Services Corridor</b>	The open trenches shall be inspected by the "fauna clearing persons" for trapped fauna each day by no later than three hours after sunrise and half an hour prior to backfilling of the trench.		CR, Extension Hill & Extension Hill North Environmental Management Plan (Rev 2)	CEO		Construction		Not required at this stage
753:M13.11	<b>Fauna Management along the Services Corridor</b>	In the event of significant rainfall, the proponent shall, following the clearing of fauna from the trench, pump out any pooled water in the open trench (with the exception of groundwater) and discharge it via a mesh (to dissipate energy) to adjacent areas.		CR Extension Hill & Extension Hill North Environmental Management Plan (Rev 2)	CEO		Construction		Not required at this stage
753:M13.12	<b>Fauna Management along the Services Corridor</b>	The proponent shall produce monthly performance monitoring reports on fauna management.	These reports shall include a Fauna Register on the fauna found in the trenches, and fatalities. These reports are to be provided to the	CR, Extension Hill & Extension Hill North Environmental Management Plan (Rev 2)	CEO		Construction		Not required at this stage



## AUDIT TABLE

### Proposal Implementation Monitoring Section

**PROJECT:** MT GIBSON IRON ORE MINE &

INFRASTRUCTURE PROJECT SHIRE OF YALGOO

PROPOSERS: MOUNT GIBSON MINING LIMITED and

EXTENSION HILL PTY LTD

Number	Subject	Action	How	Evidence	Satisfy	Advice	Phase	When	Status
			Department of Environment and Conservation each month, and made publicly available.						
753:M14.1	<b>Closure</b>	Prior to ground-disturbing activities, the proponent shall prepare a Preliminary Closure Plan in consultation with the Department of Environment and Conservation, the Department of Industry and Resources, the Department of Water, the Australian Bush Heritage Fund, the Australian Wildlife Conservancy, the Pindiddy Aboriginal Corporation and the relevant Local Governments, which describes the framework to ensure that the mine area and the services corridor are left in an environmentally acceptable condition	Provides: 1. the rationale for the siting and design of plant and infrastructure as relevant to environmental protection; 2. a conceptual description and design of the final landform at closure; 3. for the long-term management of groundwater and surface water systems affected by the mining operations and services corridor; 4. for the management of noxious materials to avoid the creation of contaminated areas	Extension Hill & Extension Hill North Environmental Management Plan (Rev 2)	DEC	DMP (DoIR), DoW, ABHF, AWC, PAC and LGA's	Pre-Construction	Prior to ground-disturbing activities.	Completed



## AUDIT TABLE

### Proposal Implementation Monitoring Section

**PROJECT:** MT GIBSON IRON ORE MINE &

INFRASTRUCTURE PROJECT SHIRE OF YALGOO

**PROPOSERS:** MOUNT GIBSON MINING LIMITED and

EXTENSION HILL PTY LTD

Number	Subject	Action	How	Evidence	Satisfy	Advice	Phase	When	Status
			(including acid-generating materials); 5. a rehabilitation program, which aims to restore the original vegetation communities to areas disturbed by the mining operations and construction within the services corridor, and includes completion criteria to be met; and 6. for the monitoring and response to the progress towards the re-establishment of the floristic communities as part of the rehabilitation of the area, including studies on the composition of the floristic communities on						

## AUDIT TABLE

### Proposal Implementation Monitoring Section

**PROJECT:** MT GIBSON IRON ORE MINE &

INFRASTRUCTURE PROJECT SHIRE OF YALGOO

PROPOSERS: MOUNT GIBSON MINING LIMITED and

EXTENSION HILL PTY LTD

Number	Subject	Action	How	Evidence	Satisfy	Advice	Phase	When	Status
			Extension Hill North.						
753:M14.2	<b>Closure</b>	The proponent shall make the Preliminary Closure Plan required by condition 14-1 publicly available in a manner approved by the CEO.	The Extension Hill & Extension Hill North Environmental Management Plan is publicly available on MGI's website and will be provided to DEC Library.	CR, Access to the plan from the MGI website and DEC library	CEO		Pre-Construction		Satisfactory during this period
753:M14.3	<b>Closure</b>	At least two years prior to the anticipated date of closure, or at a time agreed with the Environmental Protection Authority, the proponent shall prepare a Final Closure Plan, to the requirements of the Minister for the Environment on advice of the Environmental Protection Authority.	The Final Closure Plan shall set out details and measures for: 1. removal or, if appropriate, retention of plant and infrastructure in consultation with relevant stakeholders; 2. final landforms and the extent of the mine void; 3. long-term management of groundwater and surface water systems affected by the waste rock	Final Closure Plan	Min for Env	EPA	Operation	At least two years prior to the anticipated date of closure, or at a time agreed with the Environmental Protection Authority	Not required at this stage



## AUDIT TABLE

### Proposal Implementation Monitoring Section

**PROJECT:** MT GIBSON IRON ORE MINE &

INFRASTRUCTURE PROJECT SHIRE OF YALGOO

PROPOSERS: MOUNT GIBSON MINING LIMITED and

EXTENSION HILL PTY LTD

Number	Subject	Action	How	Evidence	Satisfy	Advice	Phase	When	Status
			<p>dumps, the mine void and the services corridor; 4. identification of contaminated areas, including provision of evidence of notification and proposed management measures to relevant statutory authorities; and 5. rehabilitation of all disturbed areas, including the mine area and the services corridor, to ensure establishment of sustainable vegetation communities with local species and local provenance, consistent with the reconstructed landscape and surrounding vegetation and in</p>						



## AUDIT TABLE

### Proposal Implementation Monitoring Section

**PROJECT:** MT GIBSON IRON ORE MINE &

INFRASTRUCTURE PROJECT SHIRE OF YALGOO

PROPOSERS: MOUNT GIBSON MINING LIMITED and

EXTENSION HILL PTY LTD

Number	Subject	Action	How	Evidence	Satisfy	Advice	Phase	When	Status
			accordance with the completion criteria.						
753:M14.4	<b>Closure</b>	The proponent shall implement the Final Closure Plan required by condition 14-3 until such time as the Minister for the Environment determines, on advice of the CEO, that the proponent's closure responsibilities have been fulfilled.	The proponent will implement the Final Closure Plan until notified by the Min for Env, or their delegate, that the proponent's closure responsibilities have been fulfilled.	CR	Min for Env	CEO	Decommissioning	Until such time as the Minister for the Environment determines, on advice of the CEO, that the proponent's closure responsibilities have been fulfilled.	Not required at this stage
753:M14.5	<b>Closure</b>	The proponent shall make the Final Closure Plan required by condition 14-3 publicly available, in a manner approved by the CEO.	The Final Closure Plan will be made publicly available on MGI's website and will be provided to DEC Library.	CR, Access to the plan from the MGI website and DEC library	CEO		Operation		Not required at this stage
753:M15.1	<b>Performance Bond</b>	As security for the due and punctual observance and performance by the proponent of the requirement to rehabilitate that part of the services corridor that lies outside		Lodgement of Performance Bond (upon request)	CEO		Pre-construction	Prior to commencement of operations of the mine	Not required at this stage





## AUDIT TABLE

### Proposal Implementation Monitoring Section

**PROJECT:** MT GIBSON IRON ORE MINE &

INFRASTRUCTURE PROJECT SHIRE OF YALGOO

PROPOSERS: MOUNT GIBSON MINING LIMITED and

EXTENSION HILL PTY LTD

Number	Subject	Action	How	Evidence	Satisfy	Advice	Phase	When	Status
		<p>mining tenure, as required by conditions 14-1(5) and 14-3(5), the proponent shall lodge with the CEO on demand prior to commencement of operations of the mine, an irrevocable Unconditional Performance Bond as nominated and approved by the CEO in his sole unfettered discretion to a cash value and in a form acceptable to the CEO ("the Security") which Security at the date hereof being \$5,000 per hectare of disturbance from Geraldton Port to Mongers Lake (agricultural section) and \$7,000 per hectare of disturbance from Mongers Lake to the mining tenure at the Mt Gibson mine site (pastoral section). The proponent shall lodge with the CEO an Unconditional Performance Bond executed by a Bank or other approved financial institution for due</p>							



## AUDIT TABLE

### Proposal Implementation Monitoring Section

**PROJECT:** MT GIBSON IRON ORE MINE &

INFRASTRUCTURE PROJECT SHIRE OF YALGOO

PROPOSERS: MOUNT GIBSON MINING LIMITED and

EXTENSION HILL PTY LTD

Number	Subject	Action	How	Evidence	Satisfy	Advice	Phase	When	Status
		compliance with the environmental conditions in the sum of \$576,000.							
753:M15.2	<b>Performance Bond</b>	The CEO may review the Security required by condition 15-1 at any time or times and if, on such review, the CEO considers that a security has ceased to be acceptable to the CEO, then the CEO may, with the approval of the Minister for the Environment, require the proponent to furnish replacement or additional security for performance by the proponent of its obligations to rehabilitate that part of the services corridor that lies outside mining tenure, as required by conditions 14-1(5) and 14-3(5).		Replacement or additional Security (upon request)	CEO		Overall		Not required at this stage
753:M15.3	<b>Performance Bond</b>	The proponent shall within fourteen days after written request by the CEO furnish replacement or additional security in such sum as the CEO shall nominate, in		Replacement or additional Security (upon request)	CEO		Overall	Within 14 days after written request by the CEO.	Not required at this stage



## AUDIT TABLE

### Proposal Implementation Monitoring Section

**PROJECT:** MT GIBSON IRON ORE MINE &

INFRASTRUCTURE PROJECT SHIRE OF YALGOO

PROPOSERS: MOUNT GIBSON MINING LIMITED and

EXTENSION HILL PTY LTD

Number	Subject	Action	How	Evidence	Satisfy	Advice	Phase	When	Status
		<p>a form and upon terms and conditions approved by the CEO, which approval shall not be unreasonably withheld. On receipt of approved replacement security the CEO shall release and discharge the original security. Note:</p> <p>1. In the preparation of advice to the CEO in relation to conditions 15-1, 15-2 and 15-3, the Environmental Protection Authority expects that the advice of the Department of Environment and Conservation and the Department of Industry and Resources will be obtained.</p> <p>2. The rehabilitation of the services corridor referred to in conditions 15-1 and 15-2 is required by conditions 14-1(5) and 14-3(5).</p>							



## AUDIT TABLE

### Proposal Implementation Monitoring Section

**PROJECT:** MT GIBSON IRON ORE MINE &

INFRASTRUCTURE PROJECT SHIRE OF YALGOO

PROPOSERS: MOUNT GIBSON MINING LIMITED and

EXTENSION HILL PTY LTD

Number	Subject	Action	How	Evidence	Satisfy	Advice	Phase	When	Status
753:M16.1	<b>Offsets</b>	The proponent shall implement the offset package set out in Schedule 2 to the requirements of the Minister for the Environment on advice of the Department of Environment and Conservation.		CR	Min for Env	DEC	Overall		In process

#### Notes

1. Where a condition states "on advice of the Environmental Protection Authority", the Environmental Protection Authority will provide that advice to the Department of Environment and Conservation for the preparation of written notice to the proponent.
2. The Environmental Protection Authority may seek advice from other agencies or organisations, as required, in order to provide its advice to the Department of Environment and Conservation.
3. The Minister for the Environment will determine any dispute between the proponent and the Environmental Protection Authority or the Department of Environment and Conservation over the fulfilment of the requirements of the conditions.
4. The proponent is required to apply for a Works Approval and Licence for this project under the provisions of Part V of the *Environmental Protection Act 1986*.